

PRESS RELEASE

Discreet integration of power and data - EVoline One, the new electrification solution

Luedenscheid, October 2018.

A well-equipped office that functions to optimum effect, takes into account both current flexible working methods as well as the needs for communication, ambience and adaptable technical solutions. The new built-in solution EVoline One is not only an unobtrusive eye-catcher but also has an impressive diverse range of potential applications. A flexible installation system enables the circular single socket to be installed not only in table tops but also in upholstered furniture.

The new One electrification system from EVoline provides space-saving access to power or data that can be easily integrated into any design concept. Whether in the workplace, conference room, in the lounge area or kitchenette, the EVOLINE One ensures fast and secure access to power or data – in a compact and discreet design. The circular single socket can be installed horizontally or vertically and, thanks to the wide range of module inserts, can also be adapted to meet the respective requirements. In addition to the variable inserts, EVoline also offers the individual choice of rotary cover.

Simple and secure installation

The circular design of EVoline One allows for quick installation and easy integration into all sheet materials and upholstered furniture. A hole cut-out of just 54 millimetres in diameter is needed to install the system. The patent-pending clamps provide a firm and secure attachment on panels from 9 mm thick. In this context, it makes no difference whether the circular socket is installed horizontally or vertically.

Compact and discreet

The EVoline One can be custom-configured and adapted to a variety of needs: EVOLINE

offers a wide range of international power sockets, data and multimedia modules which can be custom-selected for specific usages. In addition to the ring-shaped attachment, the single socket can also be fitted with a lid that can be easily turned on both sides. EVoline offers both elements in various colours and materials. Thanks to its near flush-mounted installation, the electrification system integrates discreetly and at the same compactly into any situation.

About Schulte Elektrotechnik

EVoline is a brand name of Schulte Elektrotechnik. In 1964 Siegfried Schulte went into business for himself in Luedenscheid, Germany, as an engineer – and to this day he is still working on his vision to make electrical systems safer and smarter. As a provider of modular system solutions for power sockets and data ports, EVoline develops product solutions for the entire spectrum of electrification of office environments as well as residential spaces. Today Schulte Elektrotechnik is active worldwide with more than 30 sales partners. All EVoline products are manufactured by some 170 employees at Schulte Elektrotechnik in Luedenscheid with extensive production depth. The large proportion of manual assembly in production ensures the high quality of workmanship. EVoline has won several design awards, in 2017 alone it took the ICONIC Award in the *product best of best* category, was the *winner* of the German Design Award and the iF Design Award.

EVoline at ORGATEC

23- 27 October 2016

Schulte Elektrotechnik

Hall 11.2, stand B-059

Media contact

Schulte Elektrotechnik GmbH & Co. KG
Marc Werk
Jüngerstraße 21
58515 Lüdenscheid
Germany
+49 (0) 2351 94 81-11
m.werk@schulte.com
www.evoline.com

mai public relations GmbH
Stefanie Geipel
Leuschnerdamm 13
10999 Berlin
Germany
+49 (0) 30 66 40 40-554
evoline@maipr.com
www.maipr.com

Please do not hesitate to contact us if you have any questions or would like further press materials. If you publish any of the materials, we would request that you send us a proof copy in digital or printed form.

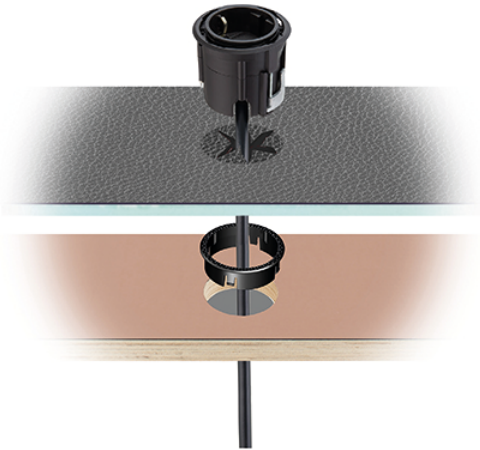
Illustrations



EVoline_One_01.jpg
 © Schulte Elektrotechnik



EVoline_One_02.jpg
 © Schulte Elektrotechnik



EVoline_One_03.jpg
 © Schulte Elektrotechnik



EVoline_One_04.jpg
 © Schulte Elektrotechnik